

## What's TRUE?

The TRUE Initiative is a partnership between the Saginaw Intermediate School District, Creating Character—a local curriculum developer—Saginaw Valley State University, and a unified group of county schools, organizations, and agencies.

In July of 2006, TRUE met with federal support and endorsement when it was selected as a Partnerships in Character Education Grant winner. This four-year, million-dollar-plus award will enable the TRUE Initiative to succeed at its vision to:

- Teach children about good character and
- Reinforce that teaching in various ways so children will
- Understand the importance of good character and
- Engage their lives in the best way possible

## How does it work?

TRUE's centerpiece is Creating Character's *Peddlesfoots* curriculum. This standards-based, pilot-proven, for-teachers-by-teachers character education curriculum teaches nine character traits to Early Childhood students. Using literature, media, hands-on activities, and connections for home and community, *Peddlesfoots* incorporates recent Harvard research, and is sure to engage and grow all learners.

By distributing and evaluating this curriculum, and providing training for teachers, TRUE will impact Saginaw's culture for years to come.

## Sign me up!

If you're invested in Saginaw County and you want to participate in this initiative, please contact us . . . and prepare to become part of our more positive future!

989.399.7457

[truesaginaw.org](http://truesaginaw.org)

You should  
join the  
TRUE  
Initiative!

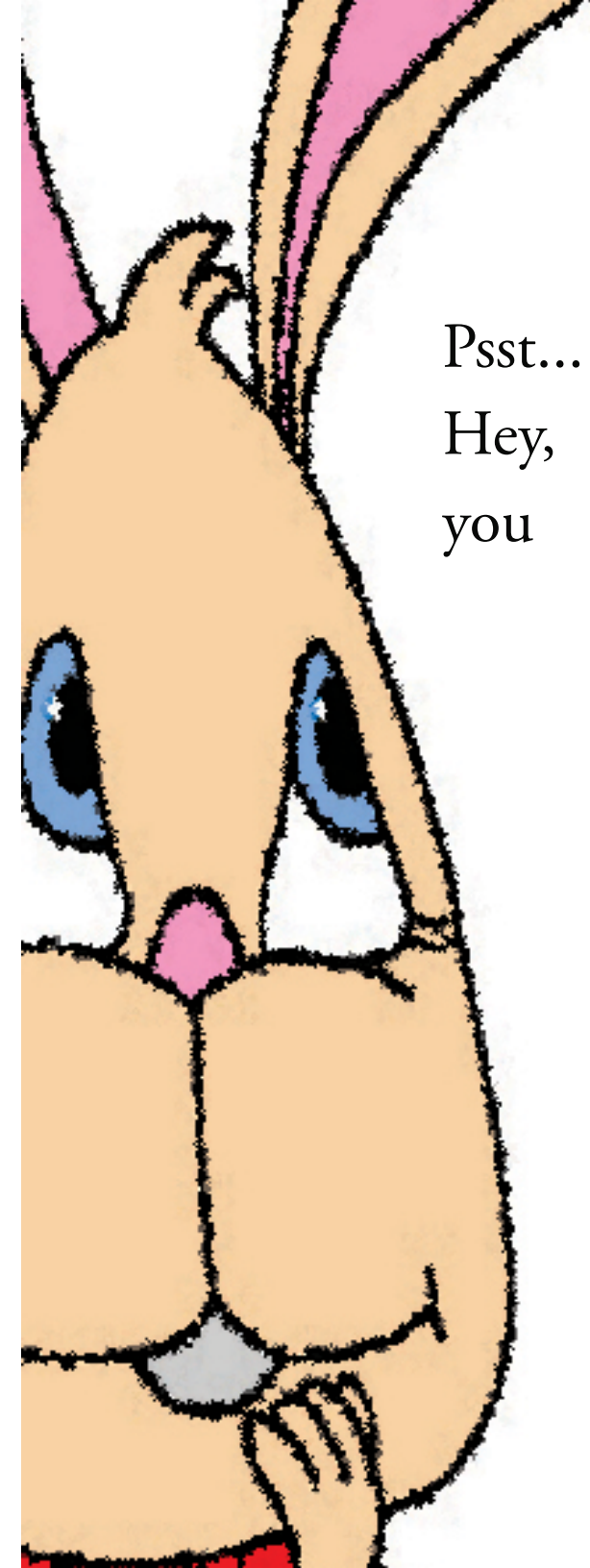




Wanna help  
make an  
impact  
on the  
character of  
Saginaw's  
youth?



TRUE character is contagious:  
Teach, Reinforce, Understand, Engage



Psst...  
Hey,  
you